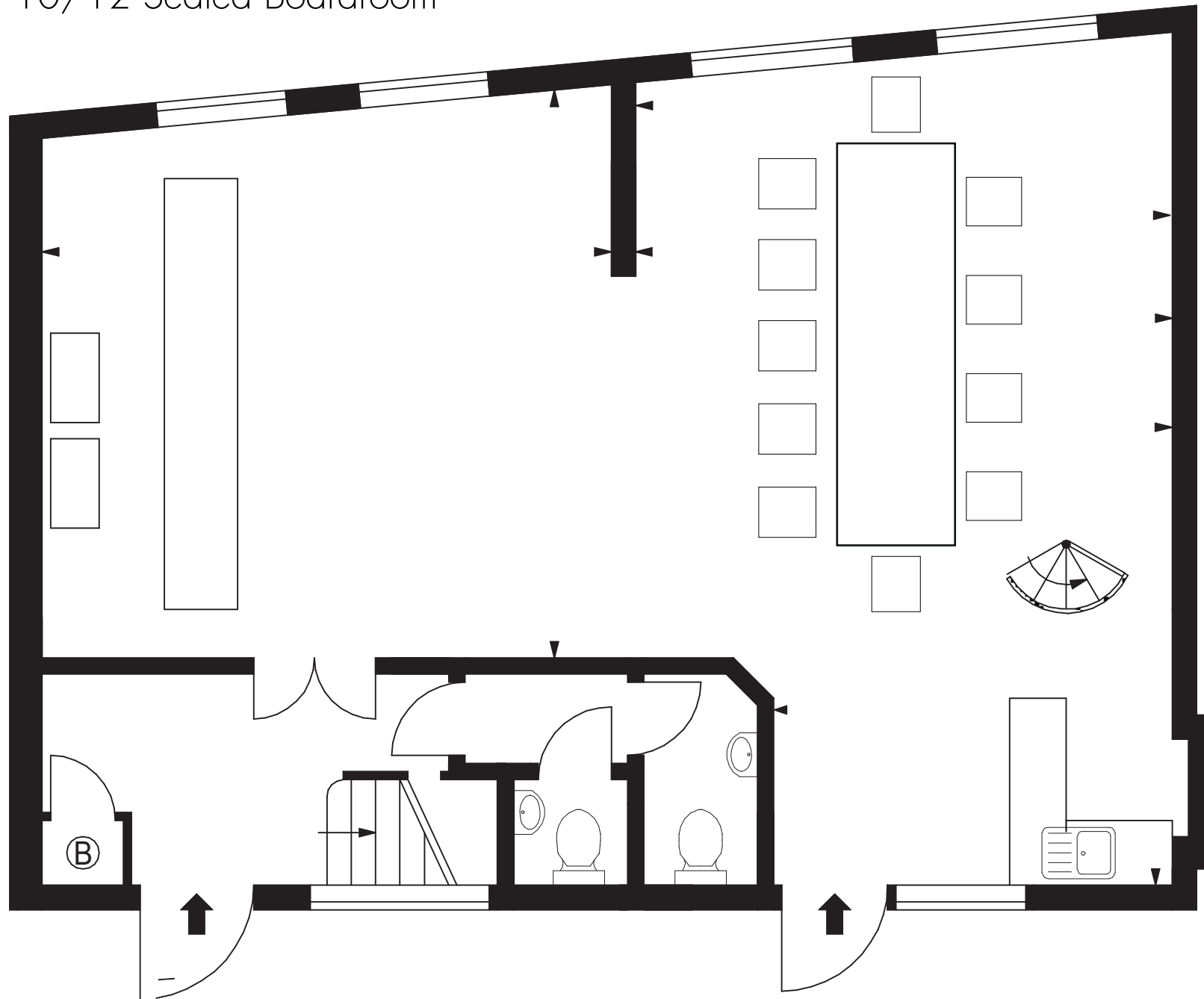
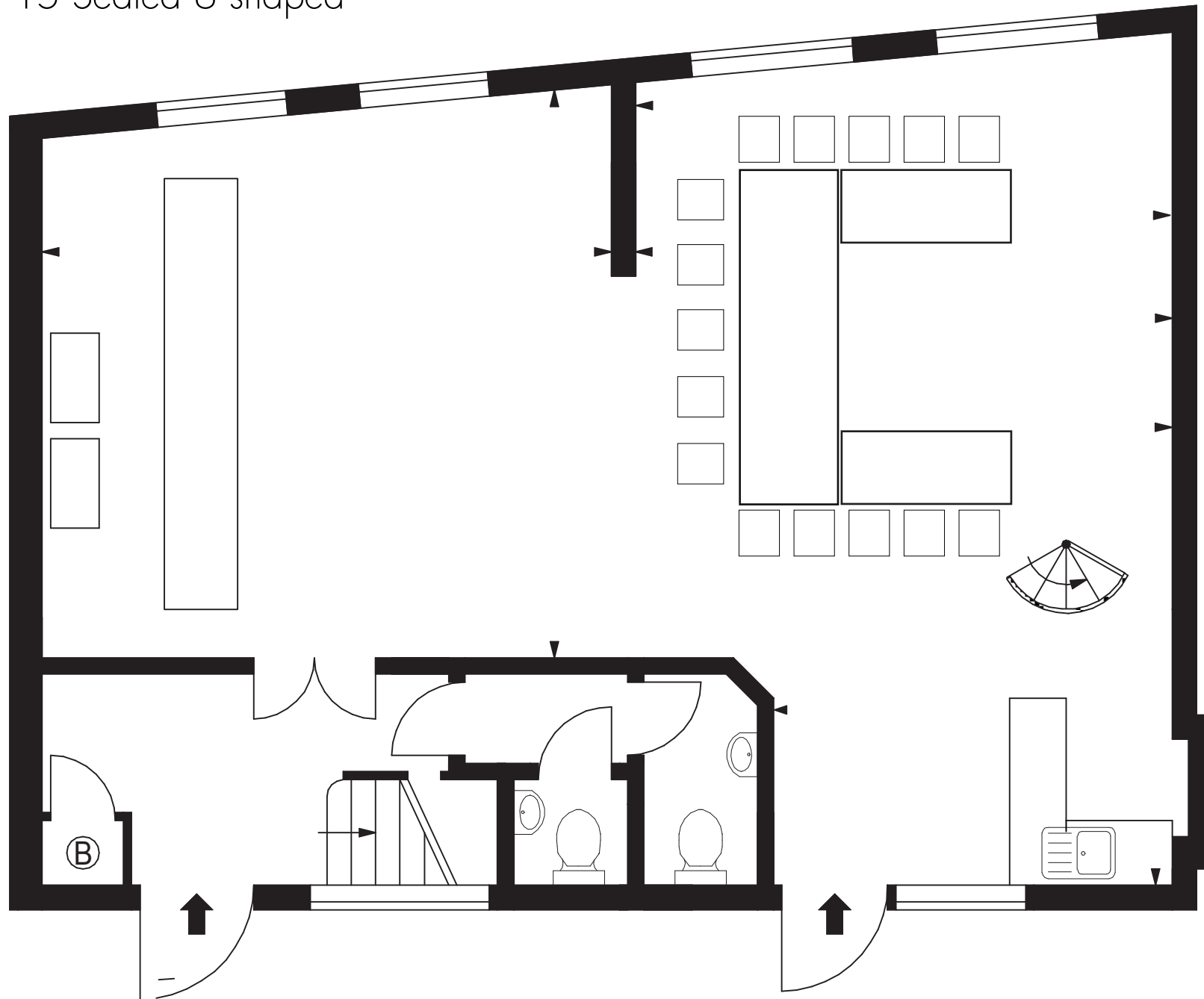


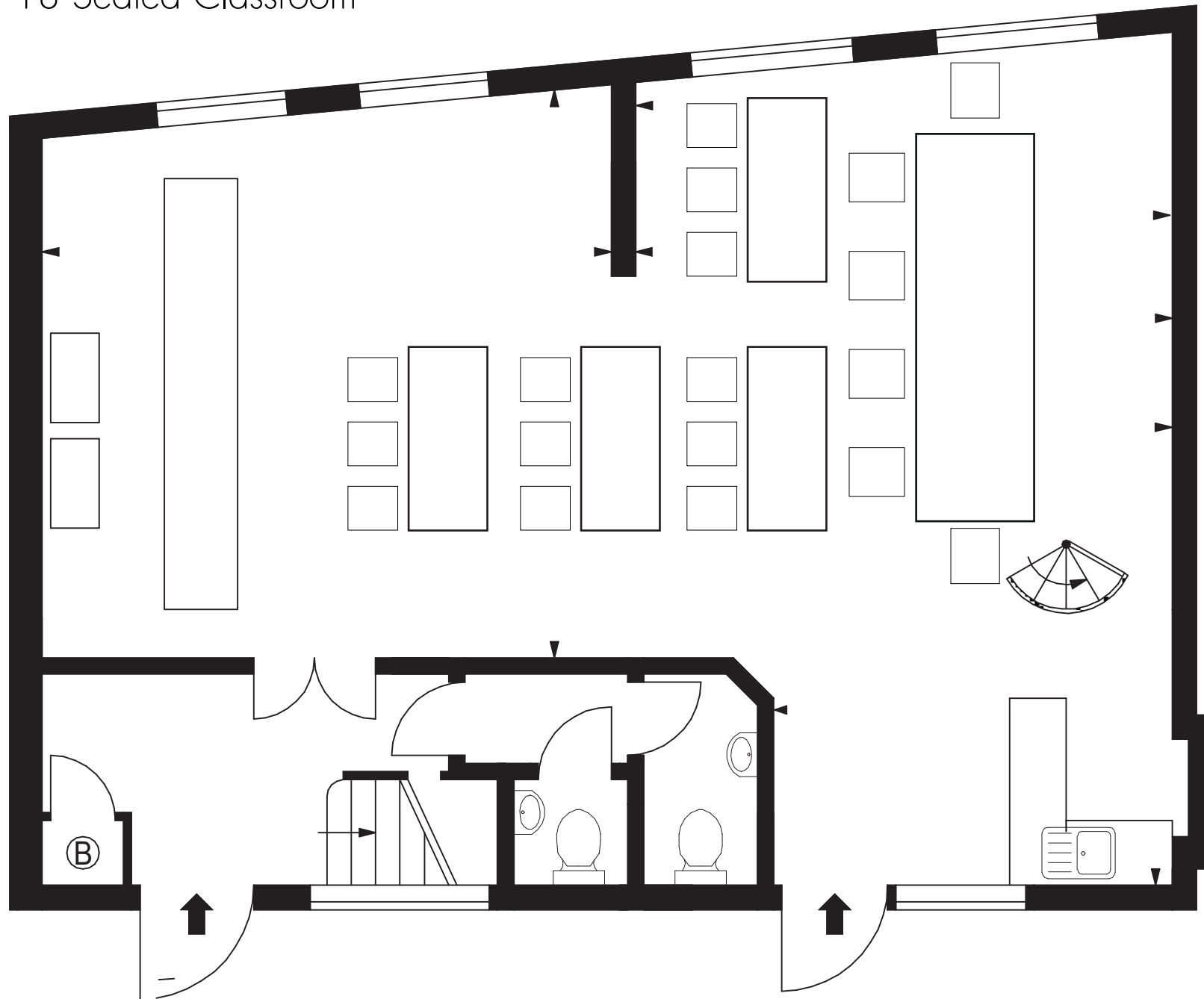
10/12 Seated Boardroom



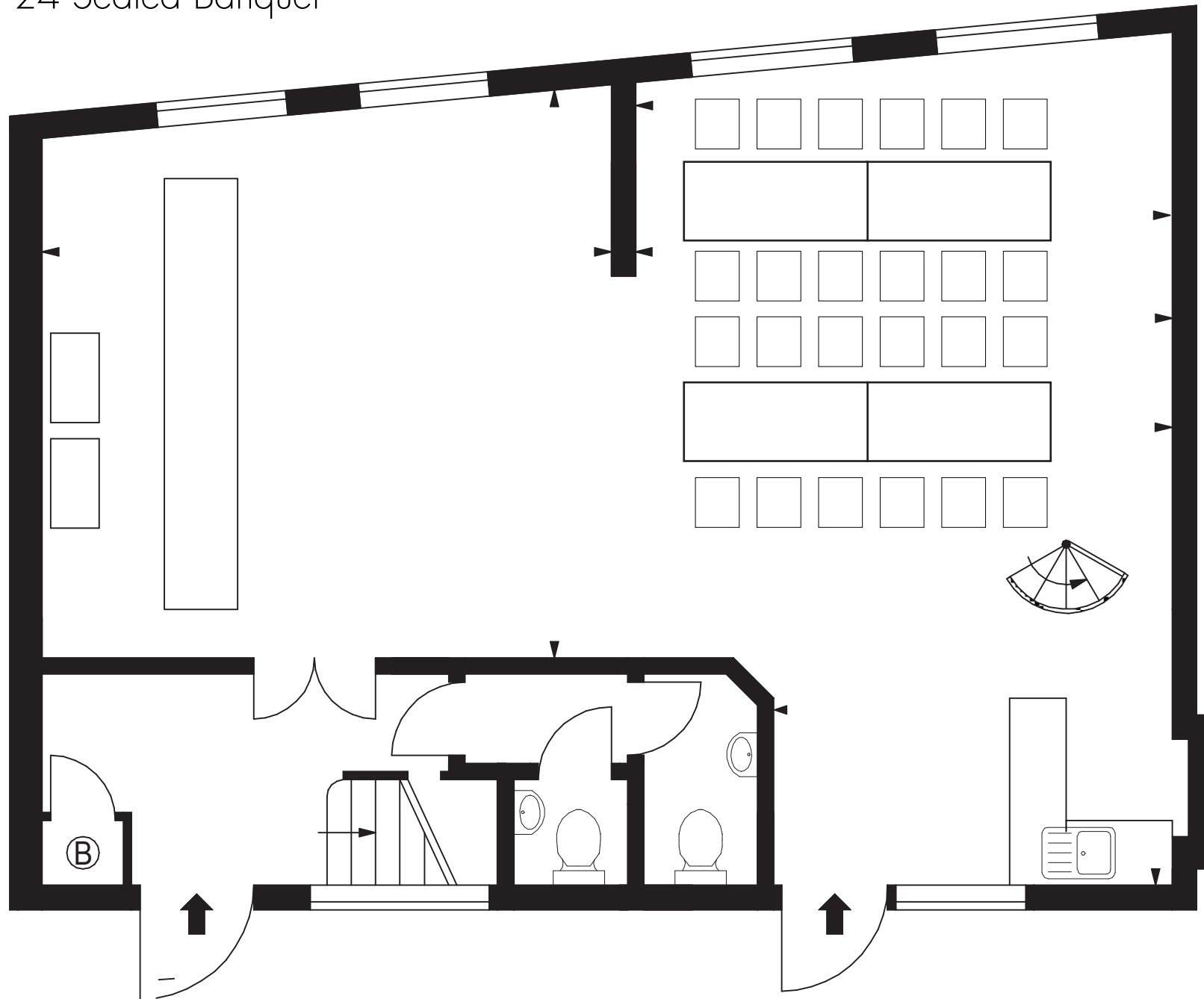
15 Seated U shaped



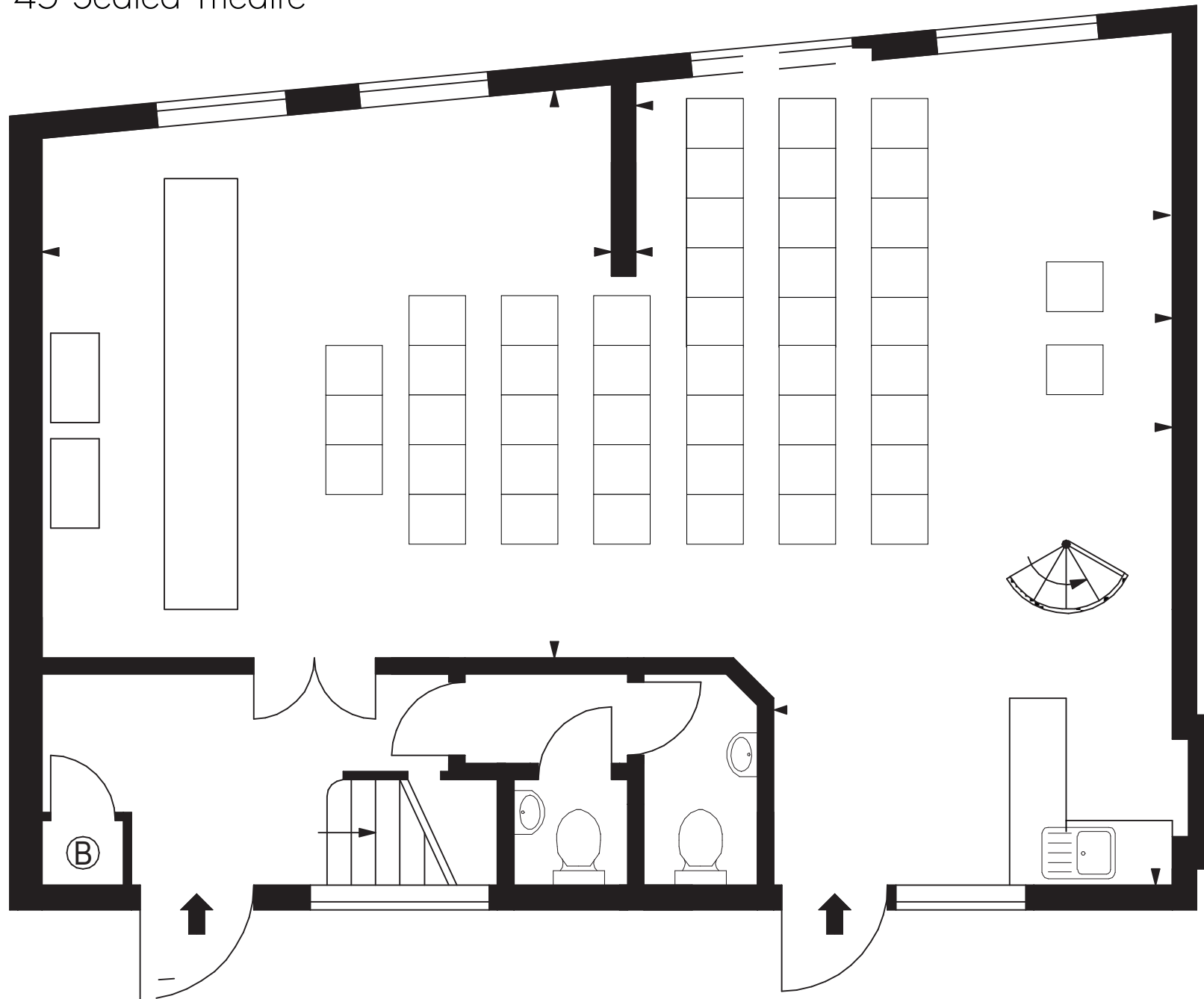
18 Seated Classroom

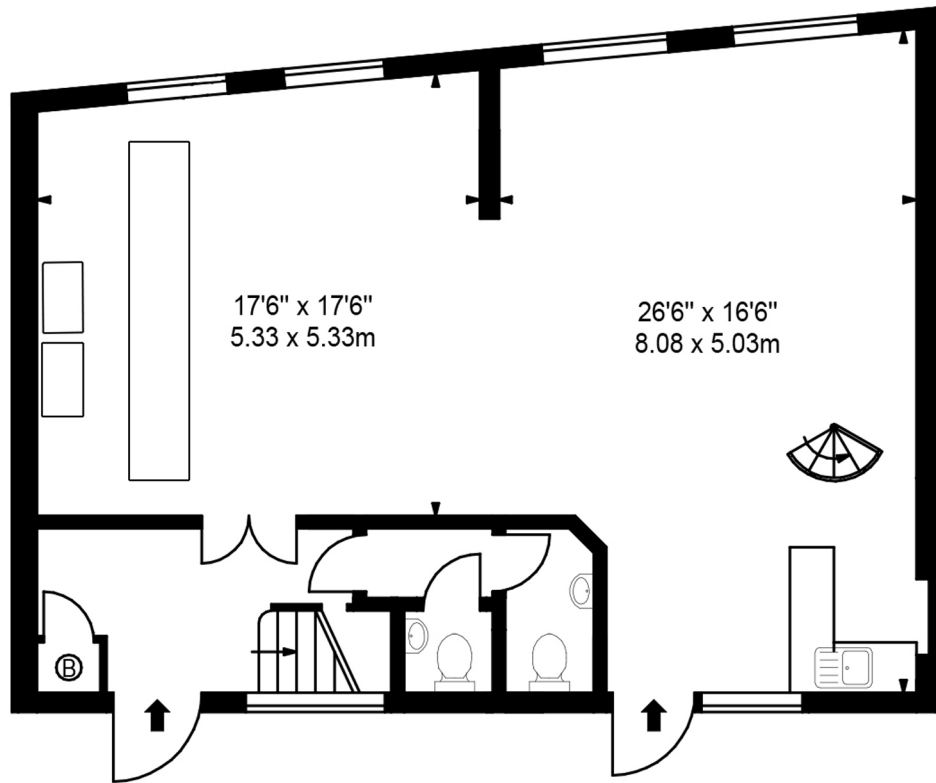


24 Seated Banquet

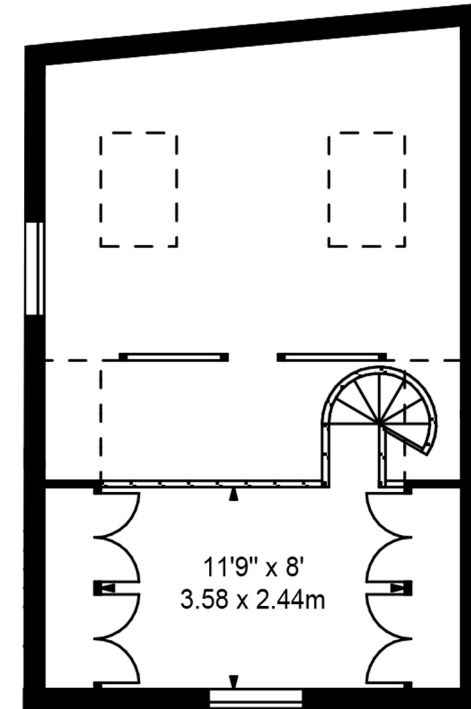


45 Seated Theatre





GROUND FLOOR



MEZZANINE

APPROX. GROSS INTERNAL AREA *
1630 Ft² - 151.43 M²

Property Details:

**THE FORGE
COLSON YARD
BRISTOL
BS1 5BD**

Surveyed and Drawn By:



Sunnyhill House
3-7 Sunnyhill Road
London, SW16 2UG

Tel: 0845 257 2023
Fax: 0845 257 2024
info@bkrfloorplans.co.uk
www.bkrfloorplans.co.uk

Plans Drawn: 03.11.2016

© BKR 2016