



the
FORGE
BRISTOL

The Forge

Available for a large range of photoshoots, filming, castings, events and workshops - the Forge is the perfect backdrop for your project. With dramatic views across the Bristol skyline through industrial style windows, with exposed brick walls, wooden floorboards and original features we offer a unique tapestry for your imagery.

Hire rates

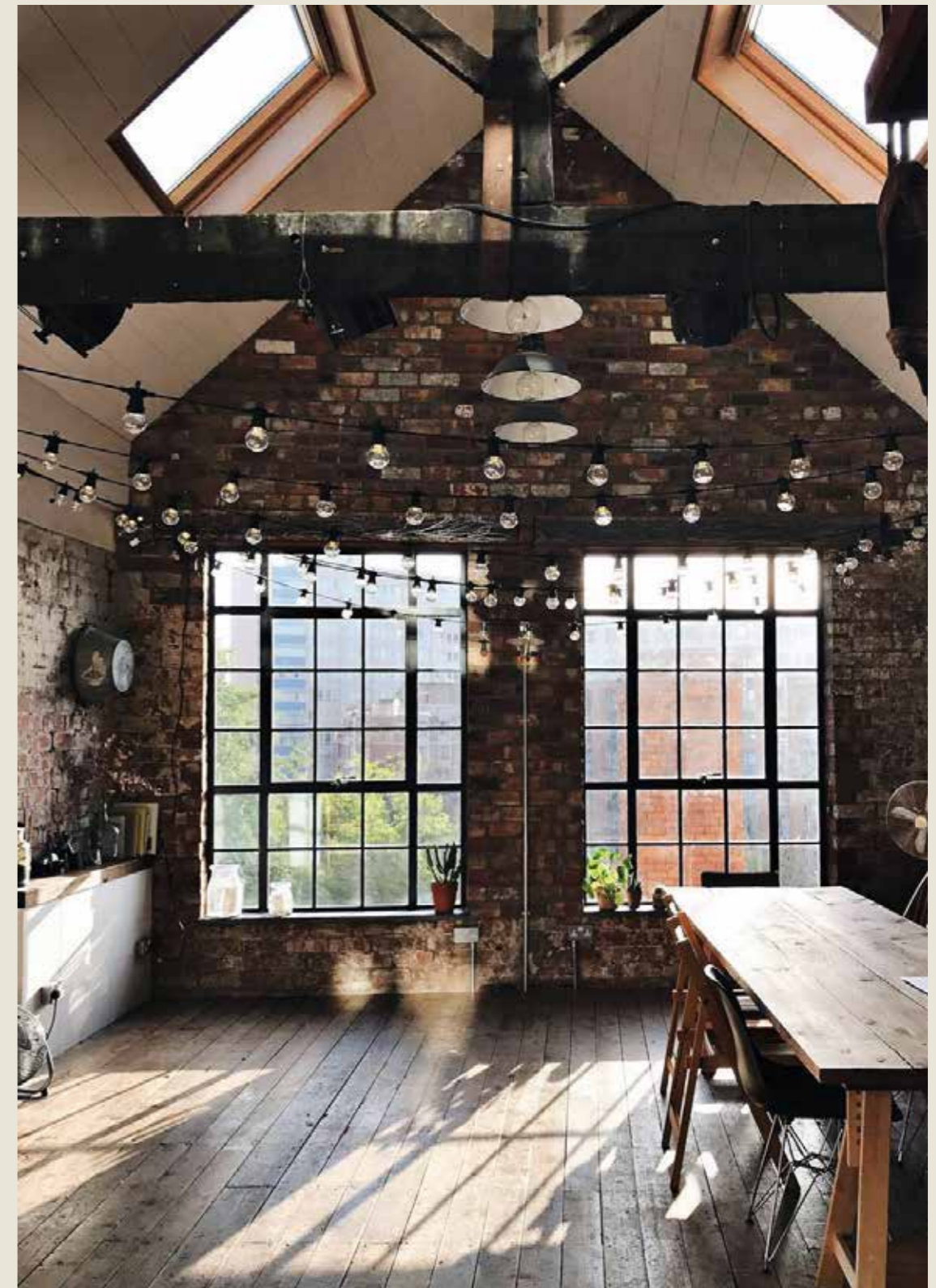
Full day (8 hrs)
£650 + VAT

Half day (morning or afternoon)
£325 + VAT

Full Day & Night (24hrs)
£1500 + VAT

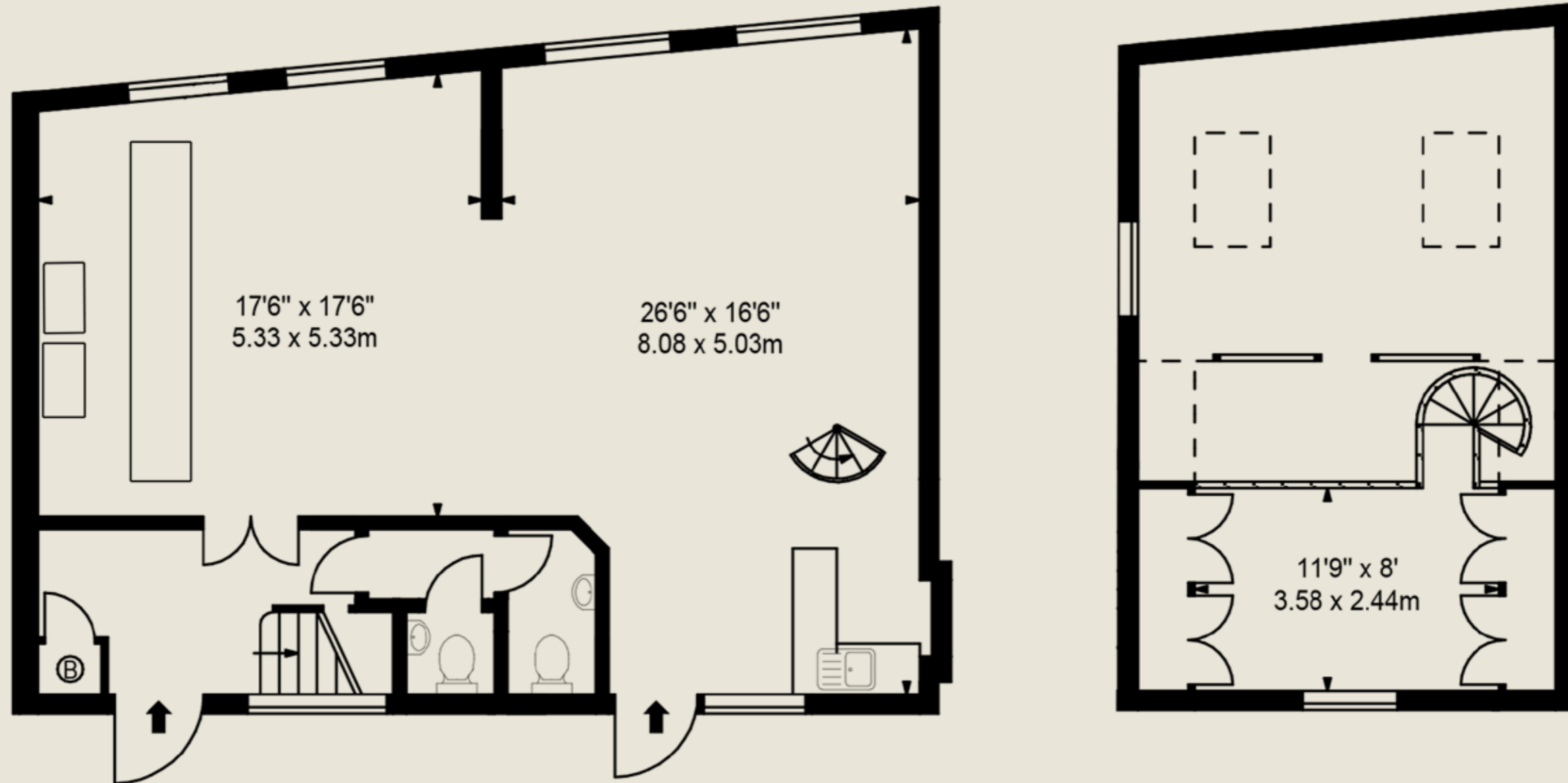
Additional hrs
£80 + VAT

**If you are a small business, charity or arts organisation
please ask us for our concession rates**



About the space

The available space is one large open room, double height with a vaulted ceiling one side and an additional mezzanine level that looks down on the main area. There are two velux windows in the ceiling of the vaulted room with black out blinds. There are curtains available the larger windows but it is not possible to black out the space entirely. The single height side has a large white wall and the mezzanine space is accessed via an original wrought iron spiral staircase.





Facilities

We have the following facilities available for your use during your day. If you have any other requirements please let us know

Parking for one vehicle

High speed wifi

Sound system

Wall mounted project & pull down screen

Mezzanine storage area

Catering

Refreshments

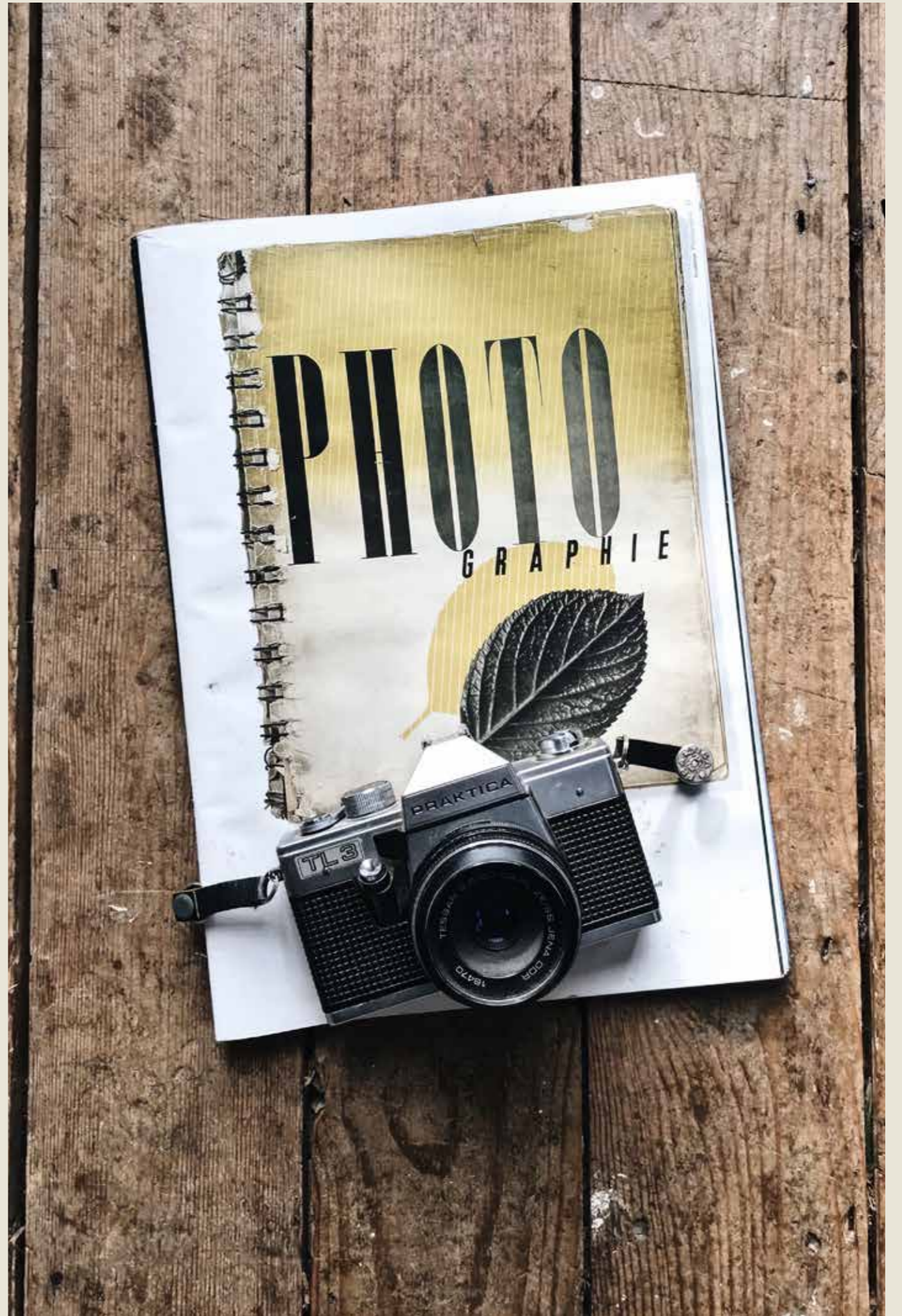
Tea, coffee, juice & biscuits (self service)

£4 pp + VAT

Lunch

You are welcome to bring your own or we can organise lunch for you. (T&C's apply)





Furniture & Props

The space comes with a selection of eclectic furniture & props you are welcome to use on shoot day. Please ask for our list of available items.

Power, lighting & noise

We have single phase power throughout the building, with multiple power sockets. The ceiling Velux have black out blinds and the large main windows have heavy curtains (removable). The remaining windows do not have coverings. The windows are double glazed & the main doors are double glazed with 10mm acoustic glass. The area is generally pretty quiet as we are set back off the main street.

Contacts

We have a small but perfectly formed book of exceptional creatives whome we work with. If you are looking for any additional talent for your project let us know and we'll link you up.







Get in touch

Please do get in touch if you would like to arrange a visit or to reserve a date for hiring.

bookings@theforgebristol.com

www.theforgebristol.com @theforgebristol

The Forge

(Formally Colston) Yard

(Colston) Street

Bristol

BS1 5BD

